



Lesson 1
Origins: Random Chance or Intelligent Design?
Apologetics Press, Answers in Christian Discovery, Evangelical Correspondence Course



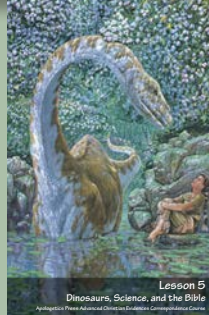
Lesson 2
Genesis 1-11: Mythical or Historical?
Apologetics Press, Answers in Christian Discovery, Evangelical Correspondence Course



Lesson 3
"In the Image and Likeness of God"
Apologetics Press, Answers in Christian Discovery, Evangelical Correspondence Course



Lesson 4
The Geologic Timescale and the Age of the Earth
Apologetics Press, Answers in Christian Discovery, Evangelical Correspondence Course



Lesson 5
Dinosaurs, Science, and the Bible
Apologetics Press, Answers in Christian Discovery, Evangelical Correspondence Course



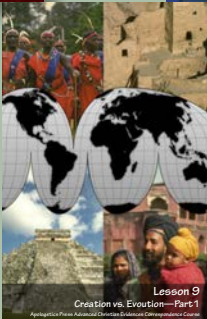
Lesson 6
The Origin of Human "Races" and Blood Groups
Apologetics Press, Answers in Christian Discovery, Evangelical Correspondence Course



Lesson 7
Christian Ethics and Human Cloning
Apologetics Press, Answers in Christian Discovery, Evangelical Correspondence Course



Lesson 8
The Destiny of the Soul
Apologetics Press, Answers in Christian Discovery, Evangelical Correspondence Course



Lesson 9
Creation vs. Evolution—Part 1
Apologetics Press, Answers in Christian Discovery, Evangelical Correspondence Course



Lesson 10
Creation vs. Evolution—Part 2
Apologetics Press, Answers in Christian Discovery, Evangelical Correspondence Course

Apologetics Press

Christian Evidences Correspondence Course
(Answers—Advanced Lessons)

Lesson 1 Questions

True or False: 1. False; 2. False; 3. True; 4. True; 5. True; 6. False; 7. True; 8. False

Multiple Choice: 1. C (nucleus); 2. A (Speed of sound); 3. D (700,000); 4. B (240,000); 5. A (300-volume set of encyclopedias, each containing 1,000 pages)

Matching: 1. C (250); 2. F (600); 3. A (137 million); 4. G (25,000); 5. B (600,000); 6. D (65,000); 7. E (1,800)

Fill in the Blanks: 1. brain; 2. designer; 3. tides; 4. absurd; 5. telescopes

Lesson 2 Questions

True or False: 1. True; 2. False; 3. False; 4. False; 5. False; 6. False; 7. True; 8. False

Complete Verse: 1. formed; 2. Adam; 3. Eve; 4. Earth; 5. beginning; 6. Noah; 7. Moses; 8. Adam

Multiple Choice: 1. C (Religion); 2. B (Old Testament's accuracy), D (Bible's teachings on origins); 3. A (Literal history); 4. B (Literal and historical nature of Genesis 1-11), C (The accuracy of the fact that man sinned, and needed salvation); 5. C (Possesses an attitude eroded by false teaching)

Matching: 1. E (*Origin of Species* published); 2. C (Written in same style/syntax); 3. H (Used by the apostle Peter as an analogy to man's salvation via baptism); 4. A (Refers back to Genesis 2:24); 5. F (1 Timothy 2:13); 6. B (Made salvation necessary); 7. D (Adam to Christ); 8. G (New Testament contains)

Lesson 3 Questions

True or False: 1. False; 2. False; 3. False; 4. True; 5. False; 6. False; 7. False; 8. False

Multiple Choice: 1. D (120); 2. A (Faithful in the ages); 3. D (600); 4. B (Destruction of Sodom); 5. A (Land-dwelling creatures), B (Birds); 6. D (Worldwide flood); 7. C (7 days); 8. A (Raven)

Matching: 1. E (*Kosmos*); 2. F (Noah); 3. C (*Kol*); 4. D (God); 5. B (Peter); 6. A (Jesus)

Fill in the Blanks: 1. died; 2. scientists; 3. local; 4. intent; 5. catastrophe

Lesson 4 Questions

True or False: 1. True; 2. False; 3. False; 4. True; 5. True; 6. True; 7. False; 8. False

Multiple Choice: 1. A (This is circular reasoning); 2. B (1/1000); 3. A (Kentucky), B (Missouri), C (Virginia), D (Pennsylvania); 4. B (Sharks); 5. A (Uniformitarianism)

Matching: 1. C (4.6 billion years); 2. G (Quarternary); 3. H (Albert G. Ingalls); 4. E (3-5 million years); 5. A (O'Rourke); 6. F (Catfish); 7. D (Mark Twain); 8. B (Mesozoic)

Fill in the Blanks: 1. Cretaceous; 2. footprint; 3. Triassic; 4. trees; 5. diatoms

Lesson 5 Questions

True or False: 1. False; 2. False; 3. True; 4. False; 5. True; 6. False; 7. False; 8. False

Multiple Choice: 1. D (200 million years ago); 2. B (Chief of the ways of God), C (Bones are as tubes of brass), D (Moves its tail like a cedar); 3. D (Richard Owen); 4. B (Terrible lizard); 5. A (Dinosaur)

Matching: 1. C (Othniel Marsh); 2. E (Stephen Jay Gould); 3. D (*Argentinosaurus*); 4. F (1842); 5. A (1611); 6. G (*Iguanodon*); 7. H (Mary Ann Mantell); 8. B (*Megalosaurus*)

Fill in the Blanks: 1. contemporaries; 2. beginning; 3. finished; 4. dinosaur; 5. mouse

Lesson 6 Questions

True or False: 1. True; 2. False; 3. False; 4. True; 5. False; 6. False; 7. True; 8. False

Multiple Choice: 1. B (AaBb); 2. C (45%); 3. C (AB); 4. D (800); 5. D (melanin)

Fill in the Blanks: 1. hibernation; 2. heterozygous; 3. keratin; 4. marry; 5. melanin

Matching: 1. E (Subgroup of Caucasoids); 2. C (Tower of Babel); 3. F (Blood); 4. D (Warm-blooded and cold-blooded); 5. B (Noahic Flood); 6. A (8%)

Complete Verse: 1. good; 2. blood; 3. mother

Lesson 7 Questions

True or False: 1. False; 2. True; 3. True; 4. True; 5. False; 6. True; 7. False; 8. False

Multiple Choice: 1. C (Born with a placenta); 2. A (Nucleus); 3. D (1901); 4. A (Blood cell), B (Muscle), C (Fingernail cell), D (Hair cell); 5. B (Provide informed consent), D (Receive some benefit); 6. B (Most clones die before birth), C (Clones can be abnormal)

Fill in the Blanks: 1. impossible; 2. inefficient; 3. children; 4. mutations; 5. nuclear

Matching: 1. C (Bonnie); 2. A (Telomere); 3. D (1-2%); 4. B (James 2:26); 5. E (6%)

Lesson 8 Questions

True or False: 1. True; 2. False; 3. True; 4. False; 5. False; 6. True; 7. True; 8. True

Multiple Choice: 1. B (18); 2. D (Harry Blackmun); 3. A (Feel like a burden); B (Feel unloved); 4. B (3.7); 5. C (Physicians)

Fill in the Blanks: 1. human; 2. embryos; 3. scientifically; 4. alive; 5. beginning

Complete Verse: 1. womb; 2. name; 3. forget; 4. begotten; 5. offspring

Lesson 9 Questions

True or False: 1. False; 2. False; 3. False; 4. True; 5. False; 6. True; 7. True; 8. False

Multiple Choice: 1. D (Respond to the Gospel message in "obedience of faith"); 2. D (They have sinned); 3. B (Baptized), C (In Christ); 4. D (Does not excuse us from that law); 5. A (Belief in Christ as the Son of God), B (Confession), C (Repentance), D (Being baptized for the remission of sins)

Complete Verse: 1. nations; 2. sin; 3. Lamb; 4. faith; 5. keep; 6. enter; 7. vain

Fill in the Blanks: 1. sinners; 2. repent; 3. truth; 4. salvation; 5. unevangelized

Lesson 10 Questions

True or False: 1. False; 2. False; 3. False; 4. False; 5. True; 6. False; 7. True; 8. False

Multiple Choice: 1. D (Repent and be baptized); 2. D (Obedience of faith); 3. A (Charles G. Finney); 4. B (Not biblical); 5. D (Ananias)

Complete Verse: 1. serve; 2. calls, saved; 3. repent, baptized; 4. calling; 5. believed, heard; 6. authority; 7. Lord, Lord, does; 8. all

Matching: 1. E (Charles G. Finney); 2. B (R.A. Torrey); 3. D (Billy Graham); 4. A (Bill Bright); 5. C (Dwight Moody)

AN IMPORTANT NOTE

The text and questions of the Christian Evidences Correspondence Course are protected by copyright laws and may not be duplicated or distributed without the written consent of Apologetics Press, Inc. However, Apologetics Press grants permission to duplicate and distribute this answer sheet as the need arises. It has been designed intentionally so that the inside two pages, which contain the answers to the questions accompanying each lesson, may be photocopied onto a single 8 1/2 x 11-inch sheet for use by instructors or students. There is no need to contact the offices of Apologetics Press to request permission to copy this answer sheet if you need additional copies for use with the individual lessons.

APOLOGETICS PRESS, INC.

230 Landmark Drive
Montgomery, ALabama 36117-2752 USA