

## EVOLUTION OF THE DIGESTIVE SYSTEM?—I CAN'T SWALLOW THAT

Brad Harrub, Ph.D.

### INTRODUCTION

Hydrochloric acid (HCL) is one of the most corrosive and toxic compounds known. Most students of general chemistry can recall extensive safety instructions on the proper use and storage of this hazardous substance. Chemistry labs are commonly equipped with eye stations and showers that will rapidly wash off any accidental spills to prevent extensive burning. The material safety data sheet (MSDS) indicates that hydrochloric acid is “toxic, corrosive, and dangerous for the environment.” It goes on to warn that “ingestion may be fatal. Liquid can cause severe damage to skin and eyes” (see MSDS). Yet, this very substance is secreted on a daily basis into the human stomach!

Stomach acid poses a serious “chicken or egg” problem for evolutionists. The acids (as well as other enzymes produced by the pancreas and liver) are **required** to break down proteins and fats. Yet, the body must have some sort of protective barrier that provides protection against the corrosive action of the acid. The acid **must** be produced and stored in a protective container that prevents damage to the rest of the body. Why would the body “evolve” this container if the acid was not present? If the acid was present without a resistant lining, the stomach would digest itself. **Either** situation leaves evolutionists without a functioning digestive system. A gradual, step-by-step evolutionary process is insufficient to explain the existence of the digestive system. Rational evaluation

of the digestive process indicates that this system was created fully functional.

While many individuals mentally simplify the process of digestion into merely a tube that ushers food in and waste out of the body, the organs that comprise this system perform several different functions: ingestion, mastication, deglutition, digestion, peristalsis, absorption, and defecation. A deficiency in any one of these functions can cause problems that are then propagated on down the digestive system. Long-term deficiencies in any of these areas can lead to sickness and even death if the problem is not corrected. Life demands energy (i.e., food) for survival and growth—yet the Darwinian theory proclaims this system evolved. How does a living creature maintain existence without a fully functioning means of converting food into energy? The demand for a well-performing digestive system involving so many complex functions argues strongly for a Master Architect. Consider the evidence for the design in the human digestive system.

### INGESTION

Probably the least complex of all the processes involved in the digestive process is ingestion. During this step, food is introduced to the digestive system by the mouth. As Van de Graaff and Fox observed: “The functions of the mouth and associated structures are to **form a receptacle for food, to initiate digestion through mastication**, to swallow food, and to form words in speech” (1989, p. 851, emp. added). However, this opening that we commonly

take for granted, does not come without a serious “expense.” The mouth opens up the body to the environment—an environment filled with bacteria, fungi, dust, etc. It is estimated that more than 400 bacterial species reside in the oral cavity (Sugawara, et al., 2002, 8[6]:465), which can lead to inflammation and infection. For instance, immune compromised patients often struggle with infections of *Candida albicans* (yeast) that are contracted through the mouth.

The oral mucosa (or lining of the mouth), along with saliva, act as a primary defense

## CONTENTS

### ARTICLES

- Evolution of the Digestive System?—  
I Can't Swallow That*  
Brad Harrub, Ph.D. .... 25

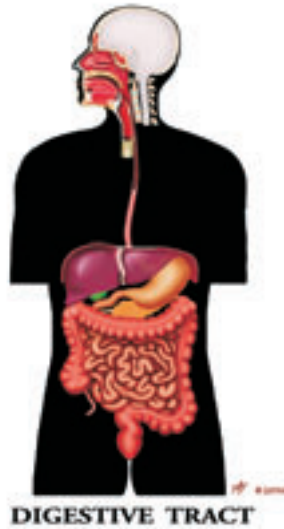
### DEPARTMENTS

- Speaking Schedules* ..... 30  
*Note from the Editors*  
*The New “Learn to Read” Childrens’ Books*  
Brad Harrub & Dave Miller. .... 32

### RESOURCES

- Dragonfly Flight and the Designer* ..... 13-R  
*Question & Answer* ..... 16-R  
*In the News* ..... 16-R

[www.ApologeticsPress.org](http://www.ApologeticsPress.org)



mechanism against a variety of microbes. Sugawara and colleagues remarked: “Oral mucosal cells such as epithelial cells are thought to act as a physical barrier against the invasion of pathogenic organisms” (8[6]:465). In a review on oral mucosal immunology, D.M. Walker noted: “The intact stratified squamous epithelium (mucosal cell layer—BH) supported by the lamina propria (layer of connective tissue underlying the epithelial layer—BH) **presents a mechanical barrier to oral microorganisms**. The continuous shedding by exfoliation of epithelial squames **limits microbial colonization** of the surface” (2004, 33:27S, emp. added). He went on to indicate that “[t]he flow of saliva has a mechanical effect, flushing microorganisms from mucosal and tooth surfaces. Saliva

also contains important antimicrobial agents...” (33:27S).

Just what type of antimicrobial agents have scientists discovered in the mouth? Dale and Fredericks observed:

The oral cavity is a unique environment in which antimicrobial peptides play a key role in maintaining health and may have future therapeutic applications. Present evidence suggests that alpha-defensins, beta-defensins, LL-37, histatin, and other antimicrobial peptides and proteins have distinct but overlapping roles in maintaining oral health and preventing bacterial, fungal, and viral adherence and infection (2005, 7[2]:119).

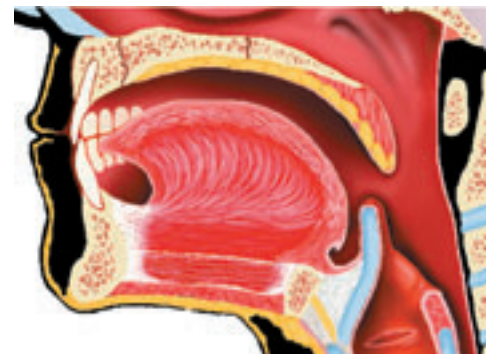
But this defense does not occur randomly. There must be a regulatory agent responsible for the production of such antimicrobials. As Sugawara, et al., concluded: “These results suggest that innate immune responses of oral epithelial cells to bacterial components are **regulated** in the inflammatory process” (2002, 8[6]:465, emp. added). The obvious questions are when and how did these oral antimicrobial agents originate, and where does the regulation take place? How long was the oral cavity in existence before these antimicrobials “evolved”? Regulation indicates that the brain (or some organ able to perform a feedback mechanism) is also required for this process—yet the brain requires energy that comes from the digestive system. The evolutionary theory cannot adequately explain any sequence of events that would place all of the required structures in place—si-

multaneously—that could provide sufficient defense for the oral cavity in order to make ingestion a safe, everyday activity. Ingestion, as simple as it may sound, required an Intelligent Designer.

### MASTICATION

Food and the ability to metabolize food are essential for life. Thus, all living things must have the means to acquire and ingest food. The esophagus—the muscular tube connecting the mouth to the stomach—is flexible and able to move food to the stomach. But it does have limitations on its diameter and the portion size that is being swallowed. As such, food often must be pulverized before it is swallowed. This grinding and tearing of food is called mastication—a process that requires teeth.

Humans are diphyodont, meaning they normally have two sets of teeth which develop at different periods in a person’s



lifetime. For instance, deciduous (or “baby”) teeth normally begin to erupt at about six months of age (Van de Graaff and Fox, 1989, p. 853). Permanent teeth replace deciduous teeth in a predictable sequence—providing adults with thirty-two teeth. The thirty-two permanent teeth can be divided into incisors, canine, premolars, and molars (see Netter, 1994, p. 50). Was it by “trial-and-error” that humans evolved “baby teeth” that enable young children to eat until their mouths grow large enough to hold permanent teeth?

Because of their function, teeth must endure a great deal of “wear and tear” as the body prepares food to be swallowed. The constant friction and abrasion from mastication demands that the surface of teeth be extremely resilient. The primary component of teeth is dentin—a substance similar to bone but harder. As Moore indicated: “Most of the tooth is composed of dentin that is covered by enamel” (1992, p. 739). The enamel that covers teeth is formed as organized mineral in a specialized protein matrix. “Enamel has the highest concentration, for any structure in the body, of mineral at ~90%. **The proteins**

**Reason & Revelation** is published monthly by Apologetics Press, Inc., 230 Landmark Dr., Montgomery, AL 36117. Pending Periodicals postage paid at Montgomery, AL. **POSTMASTER:** Send address changes to **Apologetics Press, Inc., 230 Landmark Dr., Montgomery, AL 36117.**

**Reason & Revelation** is a non-profit, tax-exempt work dedicated to the defense of New Testament Christianity. Copyright © 2006. All rights reserved.

#### Editors:

Brad Harrub, Ph.D.\*  
(\*Neurobiology, University of Tennessee)

Dave Miller, Ph.D.\*  
(\*Communication, Southern Illinois University)

#### Annual Subscription Rates:

\$10.00 Domestic  
\$ 8.00 Domestic Bulk  
(5+ to same address)  
\$16.00 Canada & Overseas Airmail

#### General inquiries, changes of address, or international callers:

Phone: (334) 272-8558  
Fax: (334) 270-2002

#### Orders:

Phone: (800) 234-8558  
Fax: (800) 234-2882

**On-line** Web store/catalog, subscription order/renewal form, current issues, archives, and other information (all orders processed on a secure server):

URL: [www.ApologeticsPress.org](http://www.ApologeticsPress.org)  
E-mail: [mail@ApologeticsPress.org](mailto:mail@ApologeticsPress.org)

**Discovery—Scripture & Science for Kids** is a sister publication for children. For more information, please contact our offices or visit the *Discovery* Web site at:

URL: [www.DiscoveryMagazine.com](http://www.DiscoveryMagazine.com)



in enamel are not found elsewhere and they are called enamelin and amelogenins” (See “Tooth Enamel,” n.d., emp. added). If these proteins are the product of evolution, then how did cellular ribosomes know the correct sequence and folding structure for proteins that are not found anywhere else?

As food is chewed, the tongue is also employed in mastication. The placement and origin of the tongue also pose an interesting dilemma for evolutionists. Consider for a moment the size and placement of the tongue. If the tongue were too large then it would interfere with digestion and respiration. If it were not in the floor of the mouth it would constantly be in the way during mastication. R.L. Wysong questioned:

How did humans develop the involuntary ability to chew food, avoiding the tongue? Can you imagine having to think your tongue into the correct places in your mouth to manipulate food and avoid biting it prior to this involuntary ability? Surely, if this ability was developed gradually, macerated tongues would have been a definite problem while the transitional stages were evolving between voluntary tongue manipulations and involuntary control (1976, p. 339).

Dr. Michael Shirley, a dentist who has been practicing family dentistry since 1989, commented: “The design pattern of teeth is too intricate a development process to have originated from a series of random selective events” (2006). He pointed out that the shape, contours, and angulation of teeth make it possible to grind and tear, whereas without proper angulation and contour, teeth would simply shred and poke holes. Shirley compared the ideal fit of upper and lower teeth with two cogs of a wheel coming together at precisely the right point. He went on to observe that he has identified several things in his practice that have never been reported in the hominid fossil record—for instance, a patient who possessed two full-functioning sets of wisdom teeth. Shirley pointed out that there have been occasions in the scientific literature where teeth were initially judged to be hundred’s of thousands of years old, only later to be discovered to be only hundred’s of years old. In evaluating the evidence that he has seen come through his office, he noted: “You don’t want to just follow after intellectual scientists dogmatically, because after all, they may be giving you sporadic, partial, or incorrect information. The evidence truly points toward design” (2006).

## DEGLUTITION (SWALLOWING)

Once food has been thoroughly chewed, it is mixed with saliva and a bolus is formed. *Stedman’s Medical Dictionary* defines bolus as: “a masticated morsel of food ready to be swallowed” (McDonough, 1994, p. 133). This process, known as deglutition (from the Latin *deglutire*, meaning to gulp), **combines both voluntary and involuntary muscles** of the head and neck. Because we swallow so often, this reflex is routinely taken for granted, but consider just how coordinated the muscles must be in order to prevent food from entering the trachea and lungs. The three steps of deglutition are as follows:

The first stage is voluntary and follows mastication, if food is involved. During this stage, the mouth is closed and breathing is temporarily interrupted. A bolus is formed as the tongue is elevated against the palate through contraction of the mylohyoid and styloglossus muscles and the intrinsic muscles of the tongue. The second stage of deglutition is the passage of the bolus through the pharynx. The events of this stage are involuntary and are elicited by stimulation of sensory receptors located at the opening of the oral pharynx.... This stage is completed in one second or less. The third stage, the entry and passage of food through the esophagus, is also involuntary.... The entire time for deglutition varies, but it is slightly more than one second in the case of fluids and five to eight seconds with solid food material (Van de Graaff and Fox, p. 861).

In 1971, evolutionist William Beck released a book titled *Human Design*, in which he described the “highly specialized musculature” function of swallowing as being “quite complex” (p. 518). Complex indeed! In their textbook *First Principles of Gastroenterology*, Thomson and Shaffer observed:

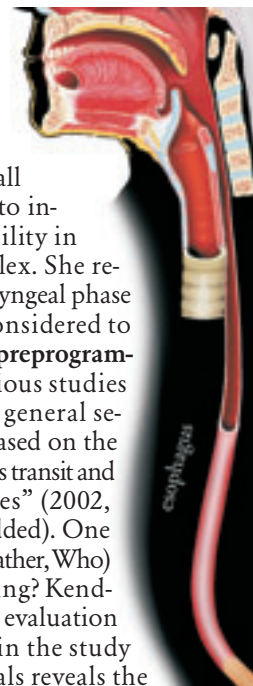
**The act of deglutition is a complex reflex activity.** The initial phase is under voluntary control. Food is chewed, mixed with saliva and formed into an appropriately sized bolus before being thrust to the posterior pharynx by the tongue. Once the bolus reaches the posterior pharynx, receptors are activated that initiate the involuntary phase of deglutition. This involves the **carefully sequenced** contraction of myriad head and neck muscles. The food bolus is rapidly engulfed and pushed toward the esophagus by the pharyngeal constrictor muscles. Simultaneously there is activation of muscles that lift the palate and close off and elevate the larynx in order to

prevent misdirection of the bolus (1994, p. 90, emp. added).

Katherine Kendall conducted a study to investigate the variability in the swallowing reflex. She remarked: “The pharyngeal phase of deglutition is considered to occur in a reflexive, **preprogrammed** fashion. Previous studies have determined a general sequence of events based on the mean timing of bolus transit and swallowing gestures” (2002, 112[3]:547, emp. added). One should ask who (or rather, Who) did the programming? Kendall concluded: “The evaluation of variability within the study group of individuals reveals the **complexity of the swallowing mechanism** and underscores the importance of not relying on general guidelines in evaluating the coordination of swallowing gestures...” (112[3]:547, emp. added). Are we to conclude that this complex mechanism evolved by random processes over millions of years?

The story does not end there. Before the bolus of food can be swallowed it must be mixed with saliva, which initiates the breakdown of starches and helps carry the bolus down the esophagus. Van de Graaff and Fox observed: “Salivary glands are accessory digestive glands that produce a fluid secretion called saliva. Saliva functions as a solvent in cleansing the teeth and dissolving food chemicals so they can be tasted. Saliva also contains enzymes, which digest starch, and mucus, which lubricates the pharynx to facilitate swallowing” (1989, p. 856). In their well-known textbook on biochemistry, Donald and Judith Voet elaborate, noting: “Saliva contains  $\alpha$ -amylase, which randomly hydrolyzes all the  $\alpha(1 > 4)$  glucosidic bonds of starch except its outermost bonds and those next to branches. By the time thoroughly chewed food reaches the stomach, where the acidity inactivates  $\alpha$ -amylase, the average chain length of starch has been reduced from several thousand to fewer than eight glucose units” (1995, p. 262). Does this complex degradation of starches via the saliva found in the mouth sound like a random accident?

Consider also that saliva glands are involuntary—that is, they secrete saliva as needed. How did this feedback loop come into existence? Saliva glands also require



a blood vessel supply and nerve innervation. Once again, we should be reminded that difficulties with swallowing can result in malnutrition and even death. The Darwinian theory is not plausible in explaining the existence of this complex process as a sudden “finished product” that was intelligently designed.

## DIGESTION

General biology textbooks present digestion as simply a tube that extends from the mouth to the anus, with absorption taking place somewhere in between. In their biology textbook, Raven and Johnson remarked: “The first great evolutionary change in digestion was the advent of a digestive cavity, which for the first time permitted animals to digest particles larger than a cell” (1989, p. 969). They then complete the evolutionary scenario:

The first true extracellular digestion among animals occurred with the evolution of the roundworms, or nematodes (phylum *Nematoda*). The members of this group have a tubular gut composed of endoderm; the gut runs from their mouth to their anus. Food moves through it on a one-way journey, being digested and absorbed along the way. Although the details have been modified in many ways, **this same general strategy is employed by all of the more complex animal phyla** (p. 969, emp. added).

Is digestion simply a matter of absorption through the walls of a modified tube? Consider the observation of Wayne Jackson:

The stomach is a truly remarkable structure. It is able to digest materials which are compositionally much tougher than it is. ‘We would have to boil our food in strong acids at 212° Fahrenheit to do with cookery what the stomach and intestines do at the body’s normal temperature of 98.6° [Miller and Goode, 1960, p. 108]. Another incredible thing about the stomach is the fact that though it consists of flesh, it does not digest itself! (2000, p. 40).

Consider some of the differences found among digestive systems in the animal kingdom. Birds possess a crop and gizzard, which are located before the stomach and facilitate grinding up food before it reaches the stomach. This structure is not found in mammals. From whence did it evolve? Additionally, vertebrates do not produce cellulase, the enzyme required to breakdown cellulose. However, many creatures depend on cellulose for nutrition and have overcome this by utilizing bacteria that live within their digestive tracts to produce

the necessary enzyme. For instance, cows possess a four-chambered stomach with a digestive pouch known as a rumen. Starr and Taggart noted:

Ruminants swallow partially chewed plant material, which moves into two stomach-like chambers. Then they regurgitate the material, chew it more, and swallow it again. The double chewing time mechanically breaks apart the plant material, which contains tough cellulose fibers. Symbiotic bacteria present in the digestive tract produce enzymes that can digest cellulose (1978, p. 434).

Symbiosis is when two organisms live close together and mutually benefit from their association. **One wonders how a four chambered stomach and this symbiotic relationship between bacteria and ruminants “evolved” in enough time for the animals to be able to digest food.** Termites, cockroaches, and other insects utilize protozoans rather than bacteria in order to break down cellulose. Rabbits employ a completely different process. As Raven and Johnson observed:

Rabbits have evolved a bizarre but effective way to digest cellulose, a way that achieves a degree of efficiency similar to that of ruminant digestion, despite the fact that a rabbit’s cecum is positioned behind the stomach, which precludes regurgitation and redigestion in it. Rabbits do this by eating feces, thus passing their food through the digestive tract for a second time. This second passage provides the rabbit with many of the important products of bacterial metabolism; rabbits cannot remain healthy if they are prevented from eating their feces and thus gaining the opportunity of digesting more of the cellulose in them (1989, pp. 981-982).

All of these processes make the animals dependent on bacteria (or protozoans) in order to break down food properly for digestion. This means these creatures are subject to, or influenced by, an outside source. This dependency argues strongly against the evolutionary theory which is dependent on natural selection and mutations to explain the existence of things today.

The beginning of digestion in humans occurs when a bolus of food leaves the mouth and is passed down the esophagus. Peristaltic action (discussed below) carries the bolus into the stomach where the mechanical and chemical breakdown of food is accomplished. In his textbook on clinical anatomy, Keith Moore noted: “The stomach acts as a food blender and reservoir where gastric juices digest the

food. It is a very distensible organ” (1992, p. 161). This distension property is vitally important, as a rigid walled stomach would be unable to accommodate large meals and would cause serious digestive problems. Van de Graaff and Fox remarked: “The mucosa is shaped into numerous longitudinal folds called gastric rugae, which permit stomach distension” (p. 863). They went on to comment: “The functions of the stomach are to store food as it is mechanically churned with gastric secretions; to initiate the digestion of proteins; to carry on limited absorption; and to move food into the small intestine as a pasty material called chyme” [from the Latin *chymus* meaning juice—BH] (1989, p. 861). The *Oxford Companion to the Human Body* states that

[t]he stomach expands to receive a meal, holds it for up to four hours depending on the amount of food, churning it to a pulp and initiating digestion, then passes it on by degrees into the duodenum. These functions **depend** on its muscular wall and the acid- and enzyme-secreting glands in its lining, all of which are under control of the autonomic nerves (Blakemore & Jennett, 2001, pp. 655-656, emp. added).

These descriptions do not sound like a simple tube that has undergone slight “modifications.” Consider for a moment that parietal cells in the stomach release approximately two liters of hydrochloric acid and other gastric secretions per day. If the stomach did not possess a protective mucosal cell layer, the digestive action of the acid would begin to break down the stomach itself (e.g., peptic ulcers). The body’s resistance to this acidic environment appears to be due to three interrelated mechanisms:

1. The stomach lining is covered with a thin layer of alkaline mucous;
2. The epithelial cells of the mucosa are joined together by tight junctions preventing the acid from leaking into the submucosa;
3. The epithelial cells that are damaged are exfoliated (shed) and replaced by new cells. This latter process results in the loss of about one-half million cells a minute, so that the entire epithelial lining is replaced every three days (Van de Graaff and Fox, p. 864).

Textbooks are silent as to how this special resistance arose. According to Raven and Johnson, this acid solution is actually about “150 millimolar HCl, and thus **3 million times more acidic than the blood**” (1989, p. 975, emp. added). The acid



## Dragonfly Flight and The Designer

Dave Miller, Ph.D.

More proof of the existence of the Master Designer comes from research conducted by Z. Jane Wang, professor of theoretical and applied mechanics at Cornell University (Gold, 2006). Centering on flying systems and fluid dynamics, Dr. Wang notes that the best way to learn about flight is by first looking at what happens **naturally**. Interesting. In order for the complex human mind to comprehend the principles of flight, that mind must focus on the **natural** order—the Creation. So mind must learn from that which, according to evolutionists, came into being and developed **without any mind**. Intelligence is dependent on **non-intelligence**. Who can believe it?

Reporting her findings at the annual meeting of the American Association for the Advancement of Science, Dr. Wang observed that her research calls into question the conventional wisdom that ascribes to airplanes (human inventions) more flight efficiency than the flying creatures of the natural realm. Dragonflies, for example, are “a marvel of engineering” (Gold, 2006). “Marvel of engineering”—without an Engineer? So claims the evolutionist—despite the irrationality of such a conclusion.

Indeed, the dragonfly possesses four wings, instead of the standard two, enabling it to dash forward at speeds approaching 60 kph. Its unusual pitching stroke allows this amazing insect to hover and even shift into reverse. According to Wang: “Dragonflies have a very odd stroke. It’s an up-and-down stroke instead of a back-and-forth stroke.... Dragonflies are one of the most maneuverable insects, so if they’re doing that they’re probably doing it **for a reason**” (Gold, 2006, emp. added). “For a reason”? But doesn’t “a reason” imply a **reasonable** mind behind the reason that **thinks** and assigns a **logical rationale** to specific phenomena?

The more scientists study dragonflies the more they are impressed with these “marvels of flight engineering” (“How Do Things...,” n.d.). They appear to twist their wings on the downward stroke, creating a whirlwind of air that flows across the wings, facilitating the lift that keeps them flying. Even more amazing, one Australian scientist, Akiko Mizutani, of the Centre for Visual Science at the Australian National University, has studied dragonflies at length in the past few years. She observes that, while chasing its prey, dragonflies “shadow their enemies in complex manoeuvres that military fighter pilots can only dream of. Their tricks create the visual illusion that **they’re not moving**” (as quoted in “How Stealthy...,” 2003, 2398:26, emp. added). In fact, according to Dr. Javaan Chahl, the

quick aerial movements allow the dragonfly to disguise itself as a **motionless object** (“Military Looks to Mimic...,” 2003, emp. added). These insights are not lost on the military establishment. They recognize the incredible implications for technological development—from the ability of fighter aircraft to approach the enemy undetected, to greater maneuverability, to enhanced helicopter logistics. Indeed, “scientists believe the insect’s flight control could have applications in new planes and helicopters” (2003). Is it any wonder that one of the very first helicopters produced was named “Dragonfly” (“Sikorsky...,” 2003)? If no one considers the helicopter as the product of time and chance, why would any reasonable person believe that the insect to which scientists are looking for an understanding of principles of flight evolved from mindless, mechanistic forces of nature?

If the human mind, with all of its complexity and ingenious design, is necessary to engineer flight capability (e.g., airplanes), what must be said for the Mind behind the human mind? If scores of intelligent scientists must expend vast amounts of time, energy, intention, deliberation, knowledge, and thought in order to discover the secrets of the “efficient motions” of the dragonfly, what must have been required to create that dragonfly in the first place? Mindless, non-intelligent, unconscious, non-purposive “evolutionary forces”? Ridiculous! Time and chance **do not** and **cannot** account for the amazing design found in insects like the dragonfly. The only logical, plausible explanation is that dragonflies were designed by the God of the Bible, and they testify to His wisdom: “You are worthy, O Lord, to receive glory and honor and power; for You created all things, and by Your will they exist and were created” (Revelation 4:11).

### REFERENCES

- Gold, Lauren (2006), “On the Wings of Dragonflies: Flapping Insect Uses Drag to Carry its Weight, Offering Insight into Intricacies of Flight,” *Cornell University Chronicle*, February 19, [On-line], URL: <http://www.news.cornell.edu/stories/Feb06/AAAS.dragonflies.lg.html>.
- “How Do Things Fly?” (no date), Boeing, [On-line], URL: [http://www.boeing.com/compan\\_yoffices/aboutus/wonder\\_of\\_flight/dragon.html](http://www.boeing.com/compan_yoffices/aboutus/wonder_of_flight/dragon.html).
- “Military Looks to Mimic Dragonflies” (2003), *ABC News*, June 5, [On-line], URL: <http://www.abc.net.au/news/newsitems/200306/s872489.htm>.
- “How Stealthy Insects Outsmart Their Foe” (2003), *New Scientist*, 2398:26, June 7.
- “Sikorsky HO2S-1/HO3S-1G ‘Dragonfly’ ” (2003), USCG Homepage, [On-line], URL: [http://www.uscg.mil/hq/g-cp/history/WEBAIRCRAFT/AC\\_Sikorsky\\_HO3S.html](http://www.uscg.mil/hq/g-cp/history/WEBAIRCRAFT/AC_Sikorsky_HO3S.html).



# QUESTIONS

**Q** What, exactly, is nothingness?

**A** That seems like a simple question. The Merriam-Webster on-line dictionary defines “nothing” as: “something that **does not exist** b: the **absence of all** magnitude or quantity” (“Nothing,” emp. added). To the average American mind, “nothing” is an understandable and understood concept. Yet those in the evolutionary community are attempting to redefine nothing. In a recent article about the theoretical branch of physics known as string physics or string theory, Dr. Michio Kaku suggested that string theory can explain the existence of the Universe. Dr. Kaku said that “a string is concentrated energy from which everything else is made. A string is so tiny that it can’t be seen with any of our instruments” (“In Tune...,” 2006, p. 30). Dr. Kaku also suggested that string theory could inform us about the events that allegedly happened before the Big Bang. These strings certainly seem to contain a wealth of potential.

In the article, he was asked, “if strings create everything, what created the antecedent space and time?” His response to this question was that “the probable answer is that space, time, and everything around us comes from *nothingness*” (p. 30, italics in orig.). Dr. Kaku was then asked, “Nothingness is actually filled with physical reality?” To which he matter-of-factly responded, “That’s right. We think nothingness is actually chock-full of interactions” (p. 30).

Observe the sleight of hand that took place in Dr. Kaku’s answers. If there ever were a time when nothing (zero matter or energy) existed, then nothing would currently exist. Knowing that, Dr. Kaku and many of his fellow string theorists say that the Universe came from nothing. Yet, when asked to define nothing, they simply say that nothing was actually filled with something. Let’s get this straight: the Universe came from nothing, but nothing is really something? One is reminded of Alice’s encounter with Humpty Dumpty in Wonderland in which Humpty stated: “When I use a word, it means just what I choose it to mean—neither more nor less.”

Simply changing the definition of nothing to something will not overcome the problem that atheists have for explaining the existence of matter. In truth, string theory, the Big Bang, and every other materialistic theory falls woefully short of explaining the existence of the Universe. The most accurate statement that has ever been made on the subject was written some 3,500 years ago: “In the beginning God created the heavens and the earth” (Genesis 1:1).

## REFERENCES

“Nothing” (no date), *Merriam-Webster On-line Dictionary*, [On-line], URL: <http://www.m-w.com/dictionary/nothing>.

“In Tune with ‘Strings’” (2006), *Advance*, Winter.

**Kyle Butt**

## IN THE NEWS

Scientists from NASA/Goddard Space Flight Center and Columbia University have uncovered evidence that confirms there was once a massive flood in the northern hemisphere. According to their computer models, the flood occurred approximately 8,200 years ago and resulted in climate changes that decreased the temperature. Their report noted:

The last major abrupt climate change occurred at ~8.2 kiloyears before present (kyr) and is recorded in multiple proxy records across the Northern Hemisphere. Contemporaneously, glacial Lakes Agassiz and Ojibway catastrophically drained into the Hudson Bay, possibly delivering enough freshwater into the North Atlantic to affect the ocean circulation (LeGrande, et al., 2006, 103[4]:837).

Could this discovery be pointing back to the Noahic Flood?



Scientists had previously documented changes in isotope, aerosol, and methane levels—all of which pointed to a major cooling event. The group used a fully coupled atmosphere/ocean general circulation model

in an effort to determine what could have caused the climate changes. Their computer model used a flow of water that was equal to between 25 and 50 times the flow of the Amazon River in twelve model runs that took more than a year to complete. While none of the scientists involved in this study would suggest that this data supports the idea of the global Flood they did indicate that the effects of this event were “clearly expressed” in Greenland and Ammersee, Germany. The scientists suggested this catastrophic flood was caused by retreating glaciers. Interestingly, they documented significant decreases in temperature in the northern hemisphere—something that creationists have long suspected would have occurred after the global Flood. Multiple evidences demonstrate that the Earth’s climate has changed, and fossil records indicate that the Earth was once covered with water. The logical conclusion that incorporates all of the available evidence is the global Flood—as recorded in the book of Genesis.

## REFERENCE

LeGrande, A.N., G.A. Schmidt, et al., (2006), “Consistent Simulations of Multiple Proxy Responses to an Abrupt Climate Change Event,” *Proceedings of the National Academy of Sciences*, 103[4]: 837-842.

**Brad Harrub**





is essential in breaking food into molecular fragments that can then be passed on to the small intestine for absorption. The acid breaks the peptide bonds of proteins present in the bolus of food by pepsin under acidic conditions. **However, the production of the acid is finely-tuned—too much acid would make it impossible for the body to neutralize the acid as chyme was passed into the small intestine, whereas too little acid would not sufficiently break down the food into molecular particles.** Raven and Johnson observed: “One of the principal digestive hormones, called gastrin, regulates the synthesis of hydrochloric acid by the parietal cells of the gastric pits, permitting such synthesis to occur only when the pH of the stomach content is higher than about 1.5” (p. 975). Do these authors (or any textbook authors) give suggestions as to how this impressive involuntary feedback loop for acid production occurred? Absolutely not. But that is not the end of the story.

The human stomach also contains vast amounts of bacteria. Sheryl Ubelacker remarked: “Ask anybody for a quick definition of the stomach and they might say ‘a place for food’ or ‘acid-filled organ of the digestive system.’ But what few people know is that the human stomach is home to a vast ecosystem of microbial life that appears to have adapted to one of the harshest biological environments imaginable” (2006). Elisabeth Bik and her colleagues identified the bacterial diversity that resides in the human stomach. They observed: “A diverse community of 128 phylotypes was identified, featuring diversity at this site greater than previously described.... This gastric bacterial rDNA data set was significantly different from sequence collections of the human mouth and esophagus described in other studies, indicating that the human stomach may be home to a distinct microbial ecosystem. **The gastric microbiota may play important, as-yet-undiscovered roles in human health and disease**” (Bik, et al., 2006, 103[3]:732, emp. added). They continued: “These findings are somewhat surprising and suggest the presence of distinct bacterial communities that have adapted to multiple specific environmental habitats in the stomach” (103[3]:736). David Relman, senior investigator of the study, remarked: “The vast majority of the bacterial world is relatively harmless to us. They don’t typically cause disease and more so, **they may be very important to, may be an essential partner with us, in the maintenance of**

**our own health**” (quoted in Ubelacker, 2006, emp. added).

In addition, the stomach possesses gastric enzymes such as pepsin, which are utilized in the digestion of proteins. Enzymes within the stomach must be able to act as biological catalysts even in very low pH environments. Moreover, the production of these special enzymes must be well maintained in order for proper chemical digestion to occur in the stomach. In his famous work, *Darwin’s Black Box*, Michael Behe documented:

The body commonly stores enzymes in an inactive form for later use. The inactive forms are called proenzymes. When a signal is received that a certain enzyme is needed, the corresponding proenzyme is activated to give the mature enzyme. As with the conversion of fibrinogen to fibrin, proenzymes are often activated by cutting off a piece of the proenzyme that is blocking a critical area. The strategy is commonly used with digestive enzymes. Large quantities can be stored as inactive proenzymes, then quickly activated when the next good meal comes along (1996, p. 81).

Are we to believe this multifaceted production and storage procedure of gastric enzymes arrived by chance?

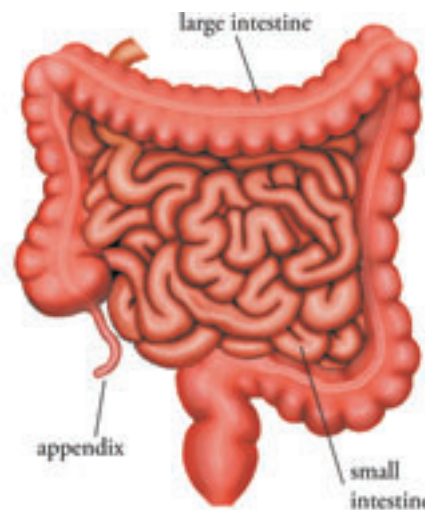
### PERISTALSIS

Most individuals are acutely aware of the low-carb craze that swept the nation recently. The premise was that by limiting carbohydrates and increasing proteins, individuals would lose weight. The rationale is that proteins are broken down in the stomach. Carbohydrates, on the other hand, are not digested in the stomach, but rather they are passed on to the small intestine, where they are converted to glucose and, if unneeded, stored as fat. In order to get the carbohydrates into the small intestine, the body is dependent on peristalsis—rhythmic, wavelike contractions that propel food through the digestive tract. Peristalsis was first described by Bayliss and Starling (1899) as a type of motility in which muscles surrounding the intestine alternate between contracted and relaxed states.

Consider the dilemma of an animal that has “evolved” the proper organs for digestion but is unable to move the food through the gut at a beneficial rate. Lest someone suggest that mere gravity is all that is needed to get food through this “modified tube,” peristalsis is dependent on smooth muscles that line the digestive tract. Claude Villee and his colleagues noted: “Gravity is not necessary to pull food

through the esophagus. Astronauts at zero gravity are able to swallow and even if you are standing on your head, food will reach the stomach!” (Villee, et al., 1985, p. 697). Bear in mind that these are **individual cells** that comprise the muscles that are acting in a coordinated fashion.

In describing the physiology of peristalsis, a Colorado State University Web site reports:



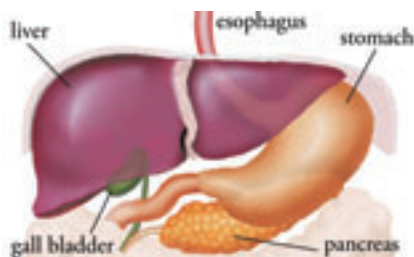
Peristalsis is a manifestation of two major reflexes within the enteric nervous system that are stimulated by a bolus of foodstuff in the lumen. Mechanical distension and perhaps mucosal irritation stimulate afferent enteric neurons. These sensory neurons synapse with two sets of cholinergic interneurons, which lead to two distinct effects: One group of interneurons activates excitatory motor neurons above the bolus—these neurons, which contain acetylcholine and substance P, stimulate contraction of smooth muscle above the bolus. Another group of interneurons activates inhibitory motor neurons that stimulate relaxation of smooth muscle below the bolus. These inhibitor neurons appear to use nitric oxide, vasoactive intestinal peptide and ATP as neurotransmitters (see “Physiology of Peristalsis,” 1995).

From a purely anatomical perspective, the nervous system, muscular system, arterial system, and a mucosal lining are all **required** in order for peristalsis to occur. Yet, all living creatures obtain metabolic energy for growth and activity through food. That means food is needed in order to develop and maintain a nervous system, muscular system, arterial system, and a mucosal lining. This places evolutionists in a significant quandary. Obviously it would be impossible for all of these sys-





as “a yellowish brown or green fluid secreted by the liver and discharged into the duodenum where it aids in the emulsification of fats, increases peristalsis, and retards putrefaction” (McDonough, p. 122). Bile is stored and concentrated in the gallbladder, a small sac located posterior to the liver itself. One crucial role that bile plays in digestion is enhancing the breakdown and absorption of fats. One textbook noted: “Through the emulsifying effects of bile salts, pancreatic lipase has access to more triglycerides—hence fat



digestion is enhanced” (Starr and Taggart, p. 440). Additionally, the liver helps to regulate the concentration of blood glucose that is circulating in the bloodstream.

As the chyme is propelled through the small intestine, brush border enzymes attached to the cell membrane of microvilli further break down food into simple sugars that can be passed on to the bloodstream. Once the chyme leaves the small intestine, it enters the large intestine (so named because of its diameter) where very little digestive action occurs. The large intestine primarily absorbs water and electrolytes from the remaining chyme and aids in the preparation, storage, and expulsion of feces from the body. Understanding that mutations do not provide new raw material (i.e., the tissue needed to compose the liver, pancreas, or large intestine), **it should be obvious that the only acceptable scientific explanation for the well-designed digestive system is an Intelligent Designer.**

## DEFECATION

Human digestion is reliant upon the body’s ability to remove waste. For instance, humans who experience a blocked colon often require surgery, and the second leading killer of dogs is a condition known as gastric dilation-volvulus—bloat. Bloat occurs when the stomach twists and the contents are trapped in place as gas continues to build up. This life-threatening condition can kill a dog in a matter of hours. Consider the fate of the first creature that unsuccessfully tried to “evolve” a method to remove waste.

Often the ability to excrete bodily waste is taken for granted—until conditions such as diarrhea or constipation are present. Additionally, this final step in digestion brings the process back under voluntary control as the external anal sphincter is innervated by voluntary nerves. Consider for a moment how different this process would be if defecation relied solely upon gravity. The human body has been designed so that pelvic muscles can be employed in order to aid in removing waste from the body. Van de Graaff and Fox noted:

During the act of defecation the longitudinal rectal muscles contract to increase rectal pressure, and the internal and external anal sphincter muscles relax. Excretion is aided by contractions of abdominal and pelvic skeletal muscles, which raise the intra-abdominal pressure and help push the feces from the rectum through the anal canal and out the anus (1989, p. 874).

Even the removal of bodily waste demonstrates purpose and design.

## CONCLUSION

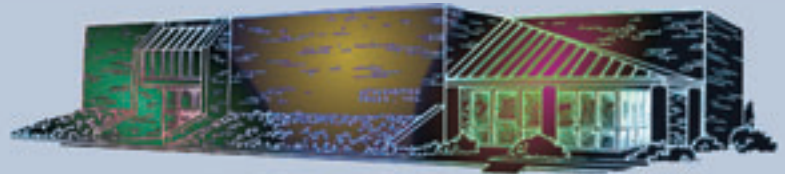
Each and everyday we introduce food and liquids into our bodies for energy. Even while we are carrying out our normal day-to-day activities, our bodies are busy behind the scene, converting food into energy for all of the cells that compose the human body. If the human digestive system were compared to a building, where energy is needed to provide heat and light, and plumbing is needed to provide water and to dispose of waste, it would require experienced engineers, master electricians, skilled carpenters, and well-trained plumbers—all working from the same set of blueprints—to construct a functional building. The human digestive system is infinitely more complex, and yet we are to believe it is simply the product of evolution? The only logical conclusion is that a Master Designer laid out the blueprints and then constructed the human digestive system the way we find it today. This intricate system is yet one more proof of God’s handiwork.

## REFERENCES

Bayliss, W.M. and E.H. Starling (1899), “The Movements and Innervation of the Small Intestine,” *Journal of Physiology*, 24:99-143.  
 Beck, William (1971), *Human Design* (New York, NY: Harcourt, Brace, & Jovanovich).  
 Behe, Michael (1996), *Darwin’s Black Box* (New York, NY: Free Press).  
 Bik, Elisabeth M., Paul B. Eckburg, et al. (2006), “Molecular Analysis of the Bacterial Microbiota in the Human Stomach,” *Proceedings of the National Academy of Science*, 103[3]:732-737, January 17.

Blakemore, Colin and Shelia Jennett, eds. (2001), *Oxford Companion to the Body* (Oxford, UK: Oxford University Press).  
 Dale, B.A. and L.P. Fredericks (2005), “Antimicrobial Peptides in the Oral Environment: Expression and Function in Health and Disease,” *Current Issues in Molecular Biology*, 7[2]: 119-133, July.  
 Demick, David A. (2003), “The Pancreas: An Important Organ that Defies Evolution,” *Think & Believe*, 20[2], [On-line], URL: <http://www.discovercreation.org/newlet/spring03.htm>.  
 Jackson, Wayne (2000), *The Human Body: Accident or Design?* (Stockton, CA: Courier Publications).  
 Kendall, Katherine A. (2002), “Oropharyngeal Swallowing Variability,” *Laryngoscope*, 112[3]: 547-551.  
 McDonough, James T. Jr., ed. (1994), *Stedman’s Concise Medical Dictionary* (Philadelphia, PA: Williams & Wilkins), second edition.  
 Miller, Benjamin and Ruth Goode (1960), *Man and His Body* (New York, NY: Simon & Schuster).  
 Moore, Keith L. (1992), *Clinically Oriented Anatomy* (Baltimore, MD: Williams and Wilkins).  
 MSDS (2004), “Safety (MSDS) Data for Hydrochloric Acid (concentrated),” [On-line], URL: [http://physchem.ox.ac.uk/MSDS/HY/hydrochloric\\_acid.html](http://physchem.ox.ac.uk/MSDS/HY/hydrochloric_acid.html).  
 Netter, Frank H. (1994), *Atlas of Human Anatomy* (Summit, NJ: Ciba-Geigy).  
 “Physiology of Peristalsis” (1995), Colorado State University, [On-line], URL: <http://www.vivo.colostate.edu/hbooks/pathphys/digestion/basics/peristalsis.html>.  
 Raven, Peter H., and George B. Johnson (1989), *Biology* (St. Louis, MO: Times Mirror/Mosby College Publishing), second edition.  
 Shirley, Michael (2006), Personal Interview, March 1.  
 Starr, Cecie and Ralph Taggart (1978), *Biology: The Unity and Diversity of Life* (Belmont, CA: Wadsworth Publishing), fourth edition.  
 Sugawara, S.A. Uehara, R. Tamai, and H. Takada (2002), “Innate Immune Responses in Oral Mucosa,” *Journal of Endotoxin Research*, 8[6]: 465-468.  
 Thomson, A.B.R. and E.A. Shaffer (1994), *First Principles of Gastroenterology: The Basis of Disease and an Approach to Management* (Mississauga, Ontario: Astra Pharmaceuticals), third edition.  
 “Tooth Enamel” (no date), Dental Find, [On-line], URL: [http://www.dentalfind.com/glossary/tooth\\_enamel.html](http://www.dentalfind.com/glossary/tooth_enamel.html).  
 Ubelacker, Sheryl (2006), “Human Stomach Home to Vast Array of Bacteria, Some Surprising: Study,” *The Canadian Press*, [On-line], URL: <http://www.canada.com/ottawacitizen/story.html?id=dd87505c-154408d-a8cd-73ee7d339a6b&k=85003>.  
 Van de Graaff, Kent M. and Stuart Ira Fox (1989), *Concepts of Human Anatomy and Physiology* (Dubuque, IA: Wm. C. Brown).  
 Villee, Claude A., Eldra Pearl Solomon, and P. William Davis (1985), *Biology* (New York, NY: Saunders College Publishing).  
 Voet, Donald, and Judith Voet (1995), *Biochemistry* (New York, NY: John Wiley & Sons), second edition.  
 Walker, D.M. (2004), “Oral Mucosal Immunology: An Overview,” *ANNALS Academy of Medicine Singapore*, 33(Supplement):27S-30S.  
 Wysong, R.L. (1976), *The Creation-Evolution Controversy* (Midland, MI: Inquiry Press).

## NOTE FROM THE EDITORS



### THE NEW “LEARN TO READ” CHILDRENS’ BOOKS



Do you remember when and how you learned to read? Perhaps you were treated to the old Dick and Jane series. Remember? “See Spot run.” Well, now imagine learning to read using biblical principles that pertain to the Creator and His creation. That is precisely why we designed the first level of the A.P. Readers: the “Learn to Read” Series. The first three offerings in this series have arrived from the printer and are now ready for distribution.

Intended for children, ages 3-6, these books not only acquaint children with the animal kingdom, they introduce children to simple sentence structure, rhyme, exclamation, question, and reinforcement through repetition. They are specifically designed for the **beginning** reader. The first three titles in the “Learn to Read” Series are *Dogs, Frogs, and Hogs*, *Bats, Cats, and Rats*, and *Birds, Bugs, and Bees*. Three more are expected to follow.

With a durable, glossy, soft cover, these volumes are printed on matt art paper and contain brilliantly colorful, attention-grabbing pictures and original drawings. Our resident graphics-design artist, Rob Baker, has done an outstanding job of layout and illustration artwork on these books. Indeed, we believe children will be thoroughly enthralled

by the captivating images. They will find learning to read a pleasure, while simultaneously being impressed with the role of the Creator in His creation.

With its talented team of dedicated professionals, A.P. continues to break new ground and scale new horizons in its ongoing commitment to advancing the cause of Christ. Children are the key to the future of the nation and the church. Educating them early, and preparing them for the onslaughts of skepticism that increasingly enshroud our society, will pay rich spiritual dividends.

Apologetics Press remains focused on its prime directive, while perpetuating the quality you have come to expect. Be looking for many more valuable, soon-to-be-released resources for children.

**Brad Harrub**  
**Dave Miller**



*See the Center  
 Spread for Pricing &  
 Order Details*